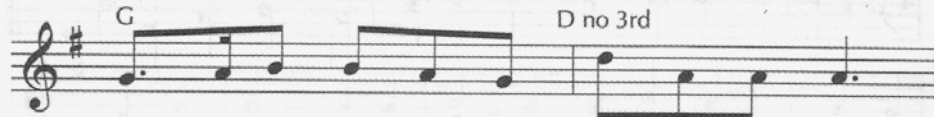


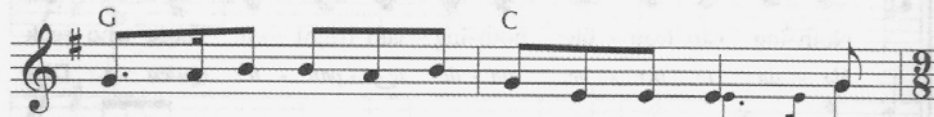
# Hope is a Candle



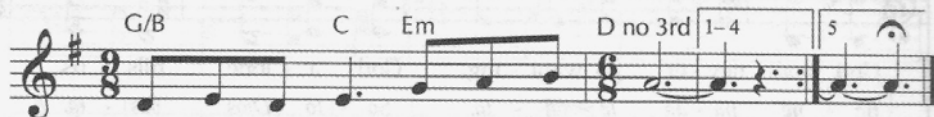
1 Hope is a can - dle, once lit by the proph - ets,  
2 Peace is a can - dle to show us a path - way,  
3 Love is a can - dle whose light makes a cir - cle,  
4 Joy is a can - dle of mys - t'ry and laugh - ter,  
5 Christ is the light that the proph - ets a - wait - ed,



1 nev - er con - sumed, though it burns through the years;  
2 threat - ened by gusts from our rage and our greed.  
3 where ev - 'ry face is the face of a friend.  
4 mys - t'ry of light that is born in the dark;  
5 Christ is the li - on, the lamb, and the child.



1 dim in the day - light of pow - er and priv - i - lege—  
2 Friend, feel no en - vy for those in the shad - ows—  
3 Wid - en the cir - cle by shar - ing and giv - ing—  
4 laugh - ter at hear - ing the voice of an an - gel,  
5 Christ is the love and the mys - t'ry and laugh - ter—



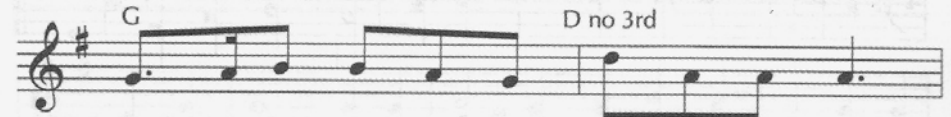
1 when they are gone, hope will shine on.  
2 vio - lence and force their dead - end course.  
3 God's ho - ly dare: love ev - ery - where.  
4 ev - er so near, cast - ing out fear.  
5 can - dles, make way! Christ is the day.

Words by Richard Leach. © 1995 Selah Publishing Co., Inc. [www.selahpub.com](http://www.selahpub.com)  
All rights reserved. Reprinted under CCLI license #11341207

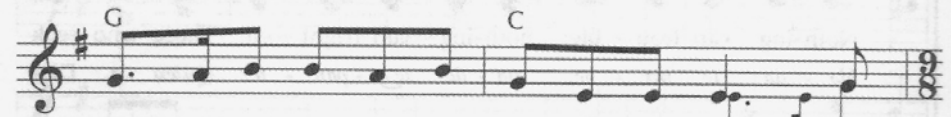
# Hope is a Candle



1 Hope is a can - dle, once lit by the proph - ets,  
2 Peace is a can - dle to show us a path - way,  
3 Love is a can - dle whose light makes a cir - cle,  
4 Joy is a can - dle of mys - t'ry and laugh - ter,  
5 Christ is the light that the proph - ets a - wait - ed,



1 nev - er con - sumed, though it burns through the years;  
2 threat - ened by gusts from our rage and our greed.  
3 where ev - 'ry face is the face of a friend.  
4 mys - t'ry of light that is born in the dark;  
5 Christ is the li - on, the lamb, and the child.



1 dim in the day - light of pow - er and priv - i - lege—  
2 Friend, feel no en - vy for those in the shad - ows—  
3 Wid - en the cir - cle by shar - ing and giv - ing—  
4 laugh - ter at hear - ing the voice of an an - gel,  
5 Christ is the love and the mys - t'ry and laugh - ter—



1 when they are gone, hope will shine on.  
2 vio - lence and force their dead - end course.  
3 God's ho - ly dare: love ev - ery - where.  
4 ev - er so near, cast - ing out fear.  
5 can - dles, make way! Christ is the day.

Words by Richard Leach. © 1995 Selah Publishing Co., Inc. [www.selahpub.com](http://www.selahpub.com)  
All rights reserved. Reprinted under CCLI license #11341207